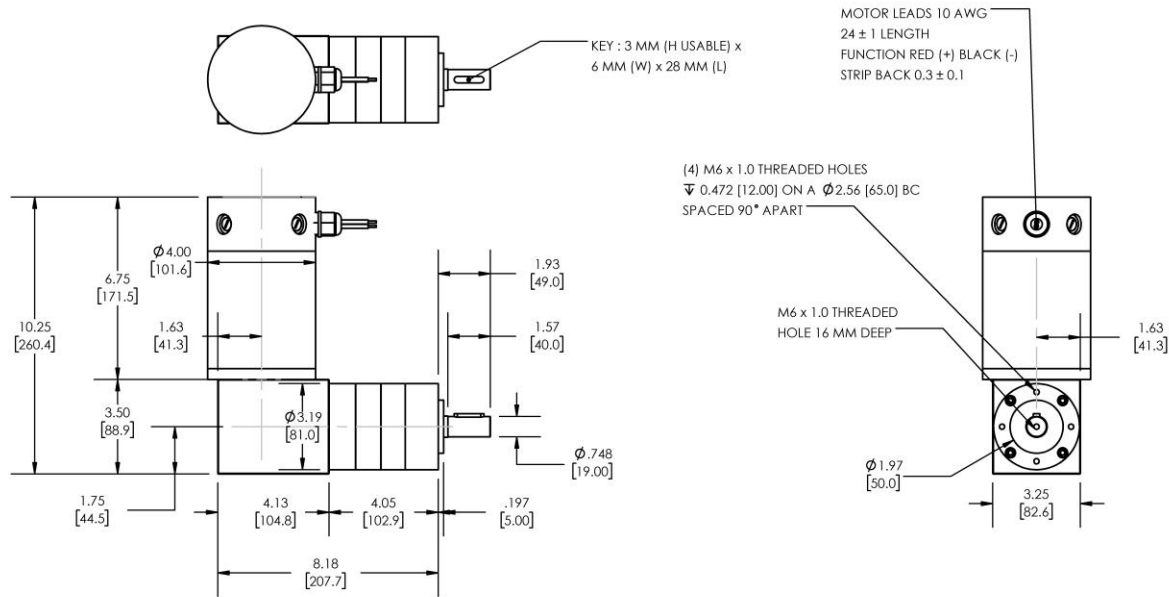


Model Number:

MMP D40-675E-48V GRA81-195



DIMENSIONS ARE INCHES [MM] UNLESS OTHERWISE STATED

PLANETARY GEARMOTOR OUTPUT PARAMETERS:	VALUE	UNITS	TOLERANCE
Gearhead Ratio (exact)	195.26 : 1		
Gearhead Shaft Output Speed (at full-load)	20	RPM	MAX
Gearmotor Rated Continuous Torque	1785	In-Lbs	MAX
Gearmotor Rated Peak Torque	2124++	In-Lbs	----
Gearhead Standard Backlash	36	Arc Minutes	MAX
Gearhead Efficiency	70%	----	----
Output Shaft Radial Load Capacity	225	Lbs	MAX
Output Shaft Axial Load Capacity	45	Lbs	MAX
Gearmotor Total Weight	22	Lbs	MAX

++ All Peak Torque values are dependent upon duty. Contact our sales office for details.

DC MOTOR PERFORMANCE PARAMETERS:	VALUE	UNITS	TOLERANCE
Rated DC Voltage	48	DC VOLTS	----
Rated Continuous Current	15.9	AMPERES	----
No-Load Speed	4286	RPM	MAX
Rated Speed	3907	RPM	+/- 15%
Rated Continuous Power Out	605	WATTS	+/- 15%
Rated Continuous Torque	209	OZ-IN	----
Peak Torque (motor only)	1809	OZ-IN	----
No-Load Current	2.04	AMPERES	MAX
Back EMF Constant (Ke)	11.2	V/KRPM	+/- 10%
Torque Constant (Kt)	15.1	OZ-IN/AMP	+/- 10%
DC Armature Resistance	0.27	OHMS	+/- 15%
Armature Inductance	0.30	mH	+/- 15%
Armature temperature	155	DEG. C	MAX

NOTES:

- ENCODER & BRAKE OPTIONS AVAILABLE – [FOLLOW THIS LINK FOR DETAILS](#)
- NEMA MOUNTING FLANGE OPTION AVAILABLE – [FOLLOW THIS LINK FOR DETAILS](#)

MIDWEST MOTION PRODUCTS, INC

DESIGN, MANUFACTURING & DISTRIBUTION - MOTION CONTROL EQUIPMENT

www.midwestmotion.com

email: sales@midwestmotion.com